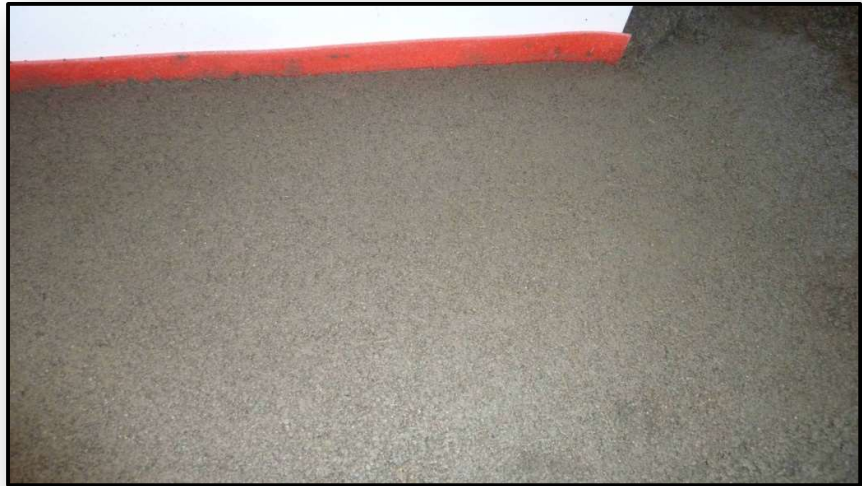




NEUFIBER



POLYPROPYLENE FIBERS FOR SLABS



- ✓ avoid shrinkage in slabs and thin concrete layers
- ✓ excellent finishing of the surface and strong reduction of cracking
- ✓ without prejudice to subsequent coatings and coverings
- ✓ no chemical reaction
- ✓ alkali resistant
- ✓ homogeneous distribution thanks to pre-measured bags

SPECIFICATION OF NEUFIBER

RAW MATERIAL:	100% pure polypropylene
SPECIFIQUE GRAVITY:	0,915 gr/cm ³
MELTING TEMP.:	160°C - 170°C
IGNITION TEMP.:	> 320°C
WATER ABSORPTION:	none
PACKING:	bags of 1 kg and loose fibers in carton boxes

DIRECTIONS FOR USING NEUFIBER

DOSAGE	approx. 1 kg/m ³
MIXING PROCESS	Fibers can be mixed in the concrete factory, according to normal processes, or at the jobsite. First sand into the mixer, add NEUFIBER fibers, mix dry so that fibers can disperse, add cement, continue to mix dry, finally add water
MIXING TIME	For mixtures on the building site, fibers must be added to the finished concrete mixture previously created. In the vehicle (5cbm) the mixing time is not more than 4-6 minutes. On 1 cbm of concrete mixing time is about 2 minutes.
NOTES:	A longer mixing time doesn't affect the distribution and the condition of fibers in the concrete.
OTHERS ADVANTAGES:	- Better resistance to abrasion and impact - Reduced weight and easy workability

Attention:

All data reported can only be considered as general indications. In case of different conditions of work and materials we suggest doing proper tests. A guarantee can be given only for the quality of our product.

<p style="text-align: center;">V.F.A. s.r.l. Via Plava, 7 - 23900 LECCO - Italien Tel. (+390341) 285812 Fax (+390341) 285792 Internet: www.vfasrl.com E-mail: vfa@vfasrl.com</p>
